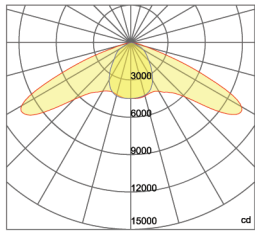


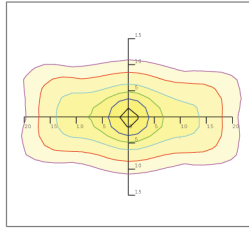
Smart™ Flood 200

Photometrics

85/135 Degree Lens (clear frosted) NEMA Type 6



— 0.0~180.0
— 90.0~270.0



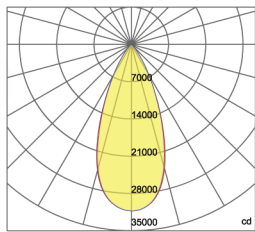
Mounting Hight 9m, 0 Tilt,
50LUX-5LUX

Illumination-85/135 Degree Beaming Angle

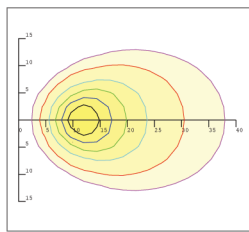
Height	Rectangular Light Spot	LUX
7m	13x34m	84LUX
8m	15x39m	65LUX
9m	16x43m	52LUX
10m	18x48m	42LUX
11m	20x53m	35LUX

Beam Angle (50% max)	85x135 DEG
Field Angle (10%)	130x150 DEG
Luminous Flux (IES)	18,003 lm
Light Efficacy (IES)	91 lm/W
NEMA Type	7H x 7V
BUG Rating	B3-U2-G3
UGR	17/31
IES Classification	Type II
Cutoff Classification	Semi-Cutoff

45 Degree Lens NEMA Type 5



— 0.0~180.0
— 90.0~270.0



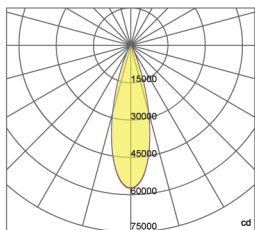
Mounting Hight 12m, 60 Tilt,
50LUX-5LUX

Illumination-45 Degree Beaming Angle

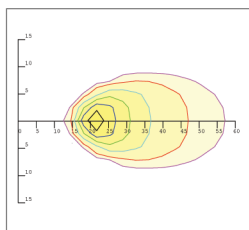
Height	Beam Diameter	LUX
15m	φ 12m	138LUX
20m	φ 17m	78LUX
25m	φ 21m	50LUX
30m	φ 25m	35LUX
35m	φ 29m	26LUX

Beam Angle (50% max)	45 DEG
Field Angle (10%)	73 DEG
Luminous Flux (IES)	19,243 lm
Light Efficacy (IES)	95 lm/W
NEMA Type	5H x 5V
BUG Rating	B5-U1-G1
UGR	14
Cutoff Classification	Cutoff

30 Degree Lens NEMA Type 3



— 0.0~180.0
— 90.0~270.0



Mounting Hight 18m, 60 Tilt,
50LUX-5LUX

Illumination-30 Degree Beaming Angle

Height	Beam Diameter	LUX
25m	φ 13m	121LUX
30m	φ 16m	84LUX
35m	φ 19m	61LUX
40m	φ 21m	47LUX
45m	φ 24m	37LUX

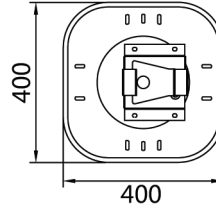
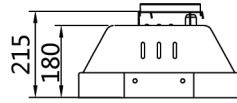
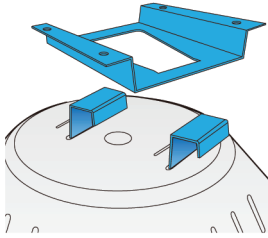
Beam Angle (50% max)	35 DEG
Field Angle (10%)	48 DEG
Luminous Flux (IES)	18,785 lm
Light Efficacy (IES)	93 lm/W
NEMA Type	3H x 3V
BUG Rating	B5-U1-G0
UGR	14
Cutoff Classification	Cutoff



Smart™ Flood 200

Mounting Options

Surface Mount



Slip Fitter Mount

