

Product # \_\_\_\_\_ Type \_\_\_\_\_ Date \_\_\_\_\_

Project Name \_\_\_\_\_

Project Location \_\_\_\_\_ Prepared By \_\_\_\_\_

# LED Helios 320W

## LED Helios 320W Specifications

The 320 watt Helios Light has been engineered efficiently as a highbay. It provides specification grade optical performance using high efficacy LED and high power factor LED drivers.

### Construction

The LED Helios Light is made out of aluminum. It has cold forged heatsink core with patented Forging Fit Technology capable of passively cooling up to 320W. Fixture has adjustable angle bracket with a 270 degree allowable swivel, adaptable to various masts and poles. It has durable surface finish to protect against corrosion and withstand harsh weathering.

### Optics/Lens

The 320 watt LED Helios is available in 90 degree beam angle. Fixture is equipped with a tempered glass lens and a waterproof sealed design.

### Electrical

High power LED source, with performance of greater than 104 lumens per watt. Standard Color Temperature 5000K, CRI of 70 or greater. Other optional color temp and CRI available on request. LED Drivers: UL/CSA recognized component to meet UL8750 & EN61347 (USR/CNR - E328335). Suitable for input power at 90-305VAC, Minimum power factor >0.98 with an operating temperature range of -40-158 degrees F / -40-70 degrees C. Dimmable.

### Finish

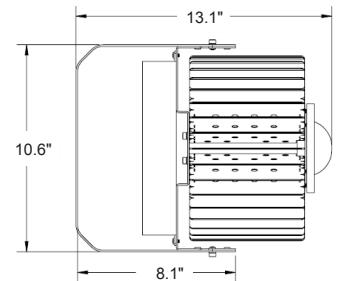
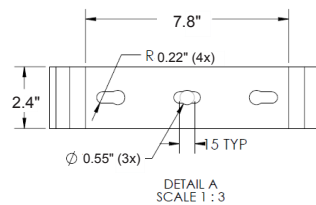
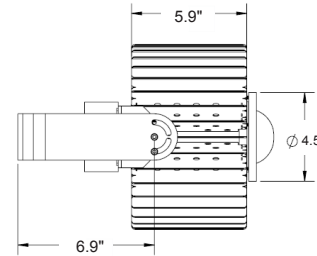
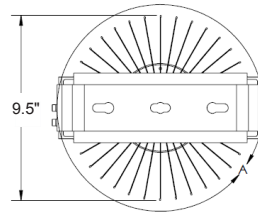
Black finish is standard. Other optional finishes are available on request.

### Warranty and Certifications

5 years for LED Light Engine and Driver, 7 years for housing. 50,000 hours @ 25°C L70 LED Illumination per LM-80. cULus Wet Locations in compliance with UL 1598 and CSA C22.2 NO. 250.0 standards. IP65 rated. Suitable for indoor/outdoor wet or damp location use. CE listed and Lighting Facts.



Size: 10.6" x 9.5" x 13.1"  
Weight: 14.4lb



## Ordering Guide

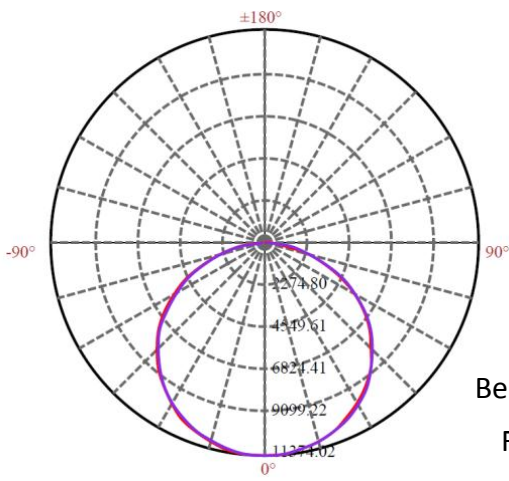
MODEL	TOTAL LED POWER	CCT COLOR TEMP	LIGHT BEAM SPREAD	INPUT VAC	LIGHTING CONTROL	GLARE CONTROL	MOUNTING
HPH	320 = 320W	27-2700K* 30-3000K* 40-4000K* 50 - 5000K Standard *+/-350K	4 = NEMA 4HX4V 5 = NEMA 5HX5V 6 = NEMA 5HX7V 7 = NEMA 7HX7V	U = Universal 90V to 305V	ND = Non Dimming D = Dimming	**Consult factory for available options	SM = Surface Mount HM = Hook Mount

Note: Due to continued efforts to improve our products, specifications are subject to change without notice.

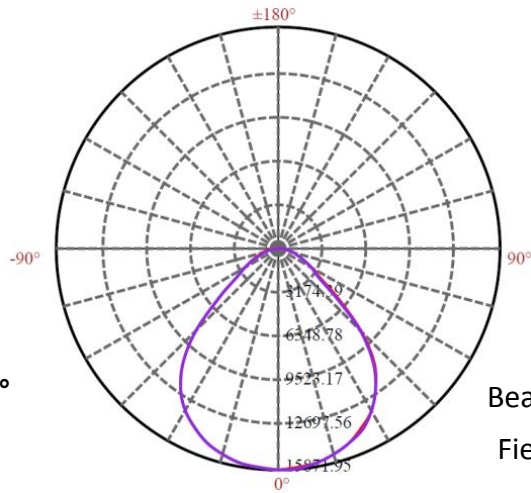


# LED Helios 320W

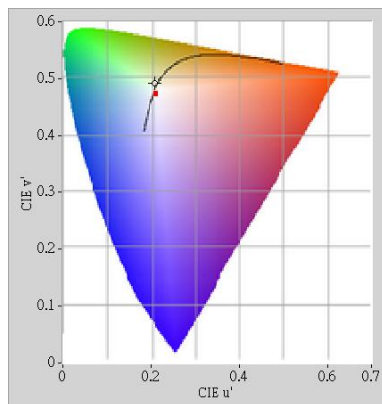
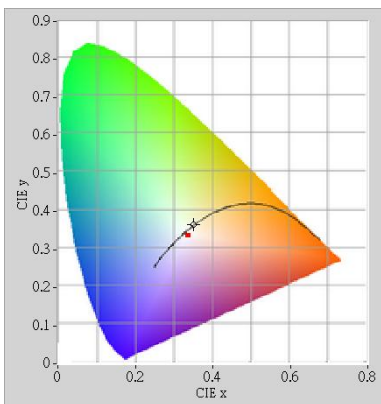
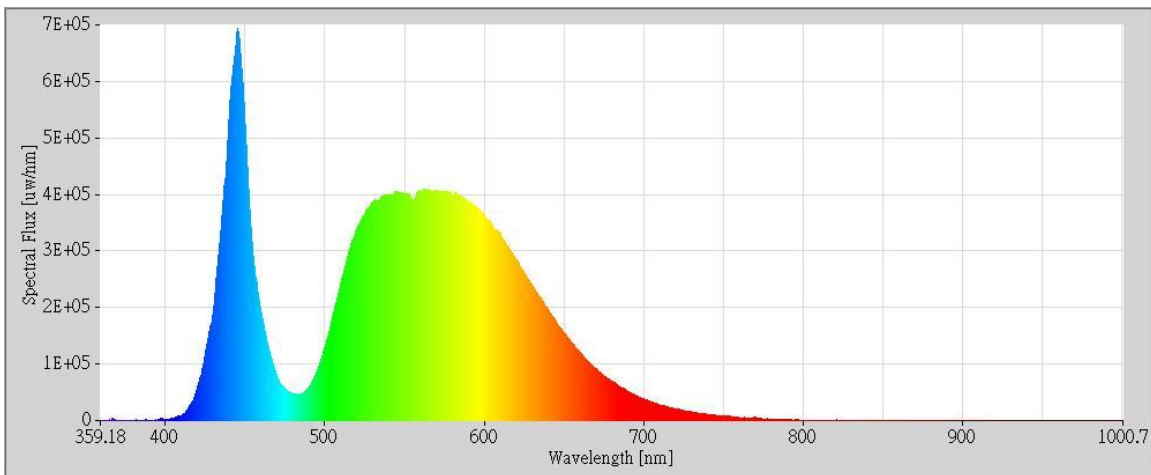
## Photometrics



**No Lens**  
Beam Angle: 118.57°  
Field Angle: 162°

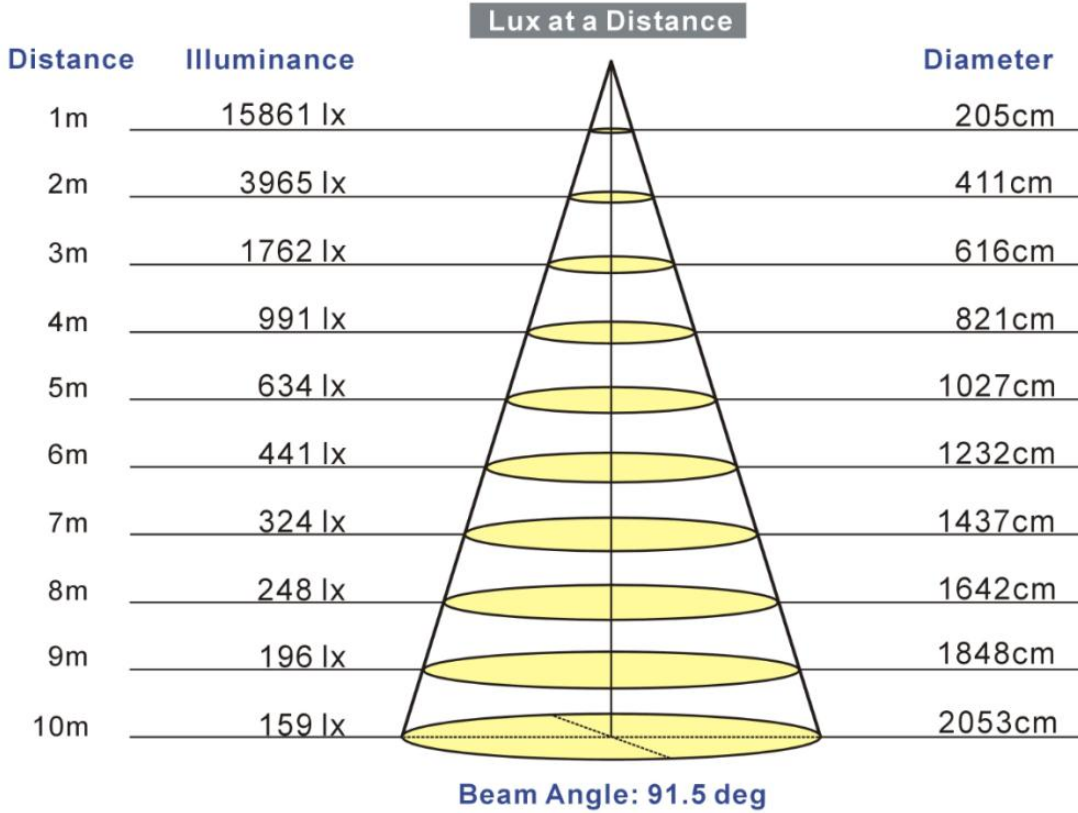


**90° Lens**  
Beam Angle: 91.5°  
Field Angle: 139°



# LED Helios 320W

## Photometrics



# LED Helios 320W

## Mounting



Hook Mount