

Product # \_\_\_\_\_ Type \_\_\_\_\_ Date \_\_\_\_\_

Project Name \_\_\_\_\_

Project Location \_\_\_\_\_ Prepared By \_\_\_\_\_

## Constellation 200W

### 200W LED Constellation Highbay

The 200 watt LED Constellation Highbay has been engineered to efficiently light any large interior space. It provides specification grade optical performance using high efficacy LED and high power factor LED drivers.

#### Construction

The LED Constellation Highbay has flexible modular design made out of aluminum alloy.

#### Optics/Lens

The 200 watt LED Constellation Highbay utilizes IP66 sealed light modules. Available in 90, 70x135, 30x100, 110, 150, and 60x100 degree beam pattern.

#### Electrical

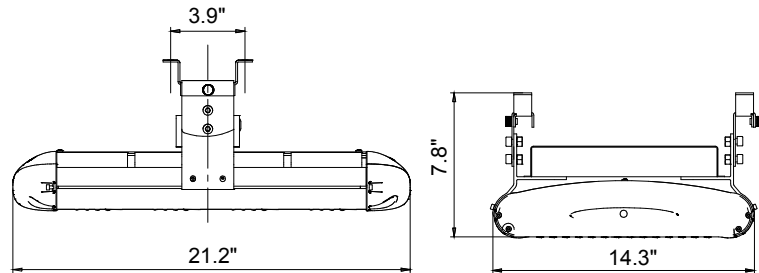
Performance greater than 100 lumens per watt. Standard Color Temperature 5500K, CRI of 80 or greater. Other optional color temp and CRI available on request. LED Drivers: UL/CSA recognized component to meet UL8750 & EN61347 (USR/CNR - E328335). Suitable for input power at 100-277 VAC. Minimum power factor over 0.95 with an operating temperature range of -22F-113F (-30C-45C). Available dimming options include: PWM, 1-10V, Microwave sensor, or Infrared sensor.

#### Product Applications

The LED Constellation Highbay is designed to efficiently light any large interior space such as warehouses and manufacturing facilities, convention centers/sporting arenas, big-box retail stores, cold storage facilities and gymnasiums.

#### Warranty and Certifications

5 years for LED Light Engine and Driver 50,000 hours L70 LED Illumination per LM-80. cETLus wet locations in compliance with UL 1598 and CSA C22.2 NO. 250.0 standards. IP66 rated. Suitable for indoor/outdoor wet or damp location use. DLC listed.



Weight: 16.3lbs / 7.4kg



### Ordering Guide

MODEL	TOTAL LED POWER	SERIES	CCT COLOR TEMP	LIGHT BEAM SPREAD	INPUT VAC	LIGHTING CONTROL	MOUNTING OPTION
Con	200 = 200W	HB	2500-5500K* 4500-5500K Standard *+/-350K	90° 70x135° 30x100° 110° 150° 60x100°	U = Universal 120V to 277V 48 = 480V* *Consult factory for 48	ND = Non Dimming D = Dimming 1-10V PWM=PWM MS=Microwave Sensor IS=Infrared Sensor	SM- Surface Mount HK- Hook/Chain Mount HB-Universal Hanging Bracket

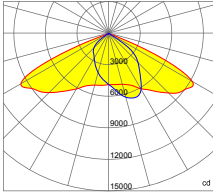
Note: Due to continued efforts to improve our products, specifications are subject to change without notice.



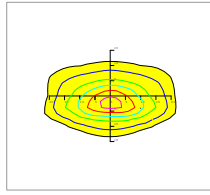
835 Industrial Drive, Elmhurst, IL 60126 708.681.4330 www.nslights.com

# Constellation 200W

## 70x135 DEGREE LENS (Forward 5°)



0.0~180.0  
90.0~270.0

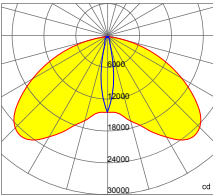


Mounting Height 11m, 0 Tilt,  
50LUX-5LUX

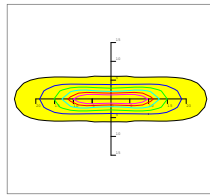
Height	Rectangular Light Spot	LUX
7m	13x34m	92LUX
8m	15x39m	72LUX
9m	16x43m	57LUX
10m	18x48m	46LUX
11m	20x53m	39LUX

Beam Angle (50% max)	70x135 DEG
Field Angle (10%)	100x160 DEG
Luminous Flux (IES)	20,000 lm
Light Efficacy (IES)	100 lm/W
Cutoff Classification	Cutoff

## 30x100 DEGREE LENS



0.0~180.0  
90.0~270.0

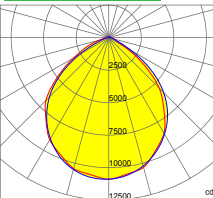


Mounting Height 12m, 0 Tilt,  
50LUX-5LUX

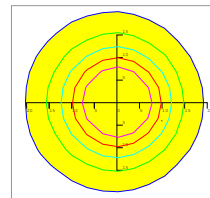
Height	Rectangular Light Spot	LUX
8m	4x15m	265LUX
9m	4x17m	209LUX
10m	4x19m	169LUX
11m	5x21m	139LUX
12m	5x22m	117LUX

Beam Angle (50% max)	30x100 DEG
Field Angle (10%)	50x120 DEG
Luminous Flux (IES)	20,000 lm
Light Efficacy (IES)	>100 lm/W
UGR	11/38
Cutoff Classification	Semi-Cutoff

## 90 DEGREE LENS



0.0~180.0  
90.0~270.0

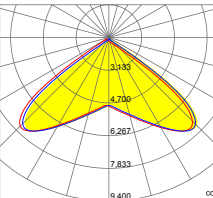


Mounting Height 20m, 0 Tilt,  
50LUX-5LUX

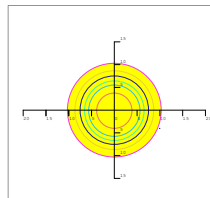
Height	Beam Diameter	LUX
7m	φ 19m	135LUX
8m	φ 23m	105LUX
9m	φ 24m	84LUX
10m	φ 28m	68LUX
11m	φ 31m	31LUX

Beam Angle (50% max)	90 DEG
Field Angle (10%)	130 DEG
Luminous Flux (IES)	20,000 lm
Light Efficacy (IES)	100 lm/W
UGR	27
Cutoff Classification	Cutoff

## 110 DEGREE LENS



0.0~180.0  
90.0~270.0

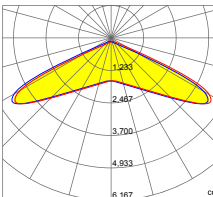


Mounting Height 10m, 0 Tilt,  
50LUX-5LUX

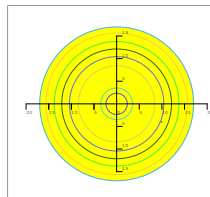
Height	Rectangular Light Spot	LUX
2m	4.0x4.3m	1202LUX
4m	8.0x8.6m	300LUX
6m	12.0x13.0m	134LUX
8m	15.9x17.3m	75LUX
10m	19.9x21.6m	48LUX

Beam Angle (50% max)	110 DEG
Luminous Flux (IES)	20,000 lm
Light Efficacy (IES)	100 lm/W
Cutoff Classification	Cutoff

## 150 DEGREE LENS



0.0~180.0  
90.0~270.0

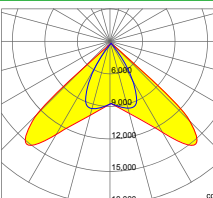


Mounting Height 10m, 0 Tilt,  
50LUX-5LUX

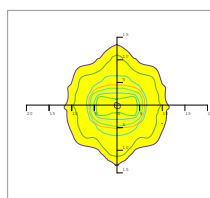
Height	Rectangular Light Spot	LUX
2m	1.8x5.3m	578LUX
4m	3.7x10.7m	145LUX
6m	5.5x16.0m	63LUX
8m	7.4x21.4m	36LUX
10m	9.2x26.7m	23LUX

Beam Angle (50% max)	150 DEG
Luminous Flux (IES)	20,000 lm
Light Efficacy (IES)	100 lm/W
Cutoff Classification	Cutoff

## 60 x 100 DEGREE LENS



0.0~180.0  
90.0~270.0



Mounting Height 10m, 0 Tilt,  
50LUX-5LUX

Height	Rectangular Light Spot	LUX
2m	1.5x2.2m	1973LUX
4m	2.9x4.4m	493LUX
6m	4.4x6.6m	219LUX
8m	5.8x8.7m	123LUX
10m	7.3x10.9m	79LUX

Beam Angle (50% max)	60x100 DEG
Luminous Flux (IES)	20,000 lm
Light Efficacy (IES)	100 lm/W
Cutoff Classification	Cutoff

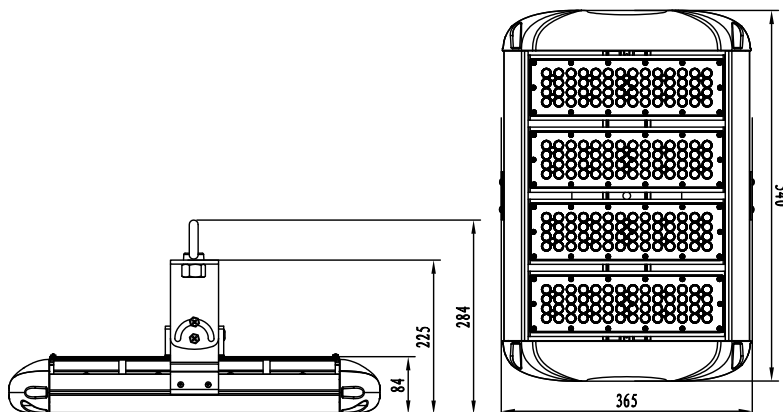


**NORTHSTAR**  
LIGHTING

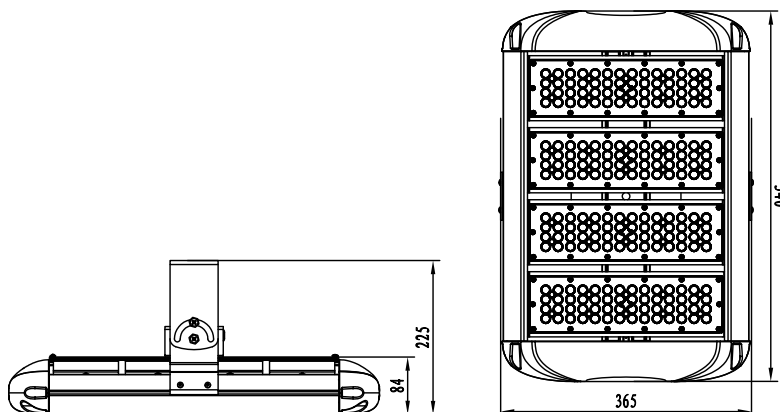
# Constellation 200W

## Mounting Options

Hook/Chain Mount



Universal Hanging Bracket



Surface Mount

