

### Wall Pak Specification

Wall Pak wall mounted luminaire combines all the design features required for commercial lighting for parking areas, walkways, loading platforms and recreational area. Shall accommodate a 400 watt mogul base high pressure sodium lamp, or 400 watt mogul base metal halide lamp. Available with (specify) 120, 208, 240, 277 volt (for 480 volt - consult factory) or 4MT (120, 208, 240 or 277V) 60 Hz. Luminaire shall be completely pre-wired.

### Basic Product Description

One piece die cast aluminum lamp and ballast housing with high impact, heat resistant, prismatic borosilicate glass diffuser housed in a die cast aluminum hinged lens frame. This design provides easy lamp access and secures to the housing with 2 stainless steel screws. A one piece silicone gasket completely seals the housing and lens frame locking out moisture and dust. WPLD is finished in all weather bronze polyester powder coating. The housing is supplied with 1/2" top and side entry threaded hub for thru wire installation. Easily installs over standard 4" junction box.

### Ballast Characteristics

All ballasts are U.L. recognized high power factor constant wattage auto-transformer (CWA) and it shall start and operate the lamp down to -20°F (-30°C) and -40°F (-40°C) for high pressure sodium. Mercury vapor lamps may be used in 400 watt metal halide fixtures. For availability of 220/240V 50Hz ballasts - consult factory.

### Reflector Assembly

The combination of a one-piece faceted anodized aluminum reflector and the prismatic borosilicate glass diffuser provides a uniform wide beam distribution. Optional polycarbonate shield and stainless steel wire guard are available.

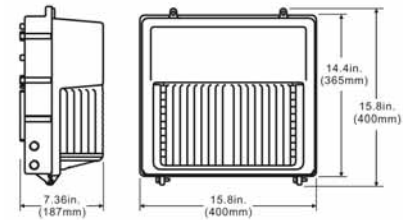
### Caution

For mounting on non-combustable surfaces only.



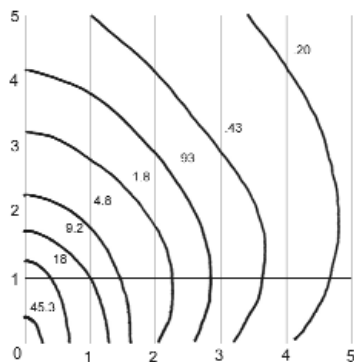
Lamp included

WEIGHT = 35 lbs



Ordering Example							
Unit	Wattage	Photometrics	Mounting	Lamp Style	Voltage	Ballast Style	
WMG	6	5	9	LS	120	H	
Wall Pak	6 - 400 4 - 250	5 - Wide Beam	9- Wall Mount	H - Metal Halide LS - High Pressure Sodium	120 208 240 277 480*	H - High Power Factor	
					4MT- (120, 208, 240, 277V)		
				<b>Accessories</b>			
				PE - Photocell			
				TP - Tamper Resistant Screws			
				PL-6 - Polycarbonate Shield			
				WG-6 - Stainless Steel Wire Guard			
	*Consult factory						
	CSA Certification - consult factory.						

### Photometrics



Lamp	Mult.
250W MH	.62
250W MV	.46

Fixture: WPLD-659LS-120H  
Lamp: 400 Watt High Pressure Sodium  
Lumens: 51,000 Initial

\*For other lamp types, apply multiplier

Mounting Height Ft.	Multiply Foot Candles by
8	1.56
10	1.00
12	0.69
14	0.51
16	0.39
18	0.31
20	0.25