

# Sonup (SPS)

## Sonup Specification

Sonup vandal resistant surface mount fixture is designed for indoor or outdoor security lighting applications. Available in two sizes: 9" square (35W-70W) and 12" square (100W-150W), medium base, high pressure sodium or metal halide lamp. Available with 120N, 120H, and 4MT (120, 208, 240, 277) volt, 60HZ ballast. Luminaire shall be completely pre-wired for ease of installation.

## Basic Product Description

Die cast aluminum ballast housing with provision for conduit box mounting or surface wiring. Access to ballast components and wiring connections is by removing the reflector. The polycarbonate prismatic lens is sealed with a closed cell neoprene gasket protecting against moisture and dust. Fixture is finished in bronze powder coating. The lens is fastened with stainless steel screws. The optical system is designed for universal burning, medium base, clear HPS or MH lamp. The unit contains a porcelain medium base socket.

## Ballast Characteristics

The Sonup shall contain a long lasting, U.L. recognized Normal Power Factor (NPF) or optional High Power Factor (HPF) auto-transformer type ballast. Will start lamps at -40°F (-40°C).

## Reflector Assembly

A white painted reflector in conjunction with the polycarbonate prismatic lens provides a uniform wide beam distribution..

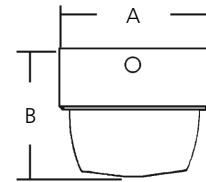
## Suggested Applications

Security lighting, walkways, entrances and exits, tunnels, loading docks, or canopies.



Suitable for wet locations  
Lamp included

WEIGHT = 7-8 lbs



A	35W-70W 9" sq.	B	35W-70W 7-3/8" sq.
	100W-150W 12-1/2" sq.		100W-150W 8-1/2" sq.

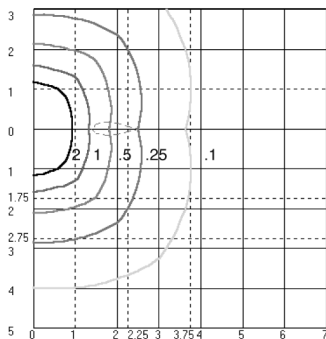
## Ordering Example

Unit	Size	Wattage	Lamp Style	Voltage	Ballast Style
SPS	12P	1	H	120	H
Sonup	12P: 12-1/2" x 12-1/2" 8P: 9" x 9"	35 - 35W 50 - 50W 0 - 70W 1 - 100W 2 - 150W	H - Metal Halide LS - High Pressure Sodium	120 4MT- (120- 277V)	H - High Power Factor N - Normal Power Factor

CSA Certification - consult factory.

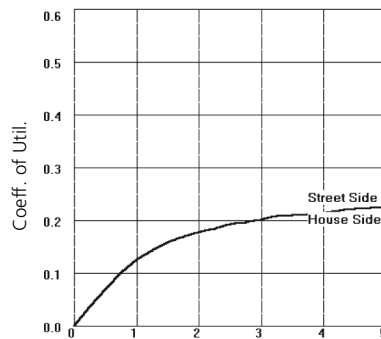
## Photometrics

Isofootcandle Lines of Illumination



Distance in Units of Mounting Heights  
Values based on 10 ft. mounting height

Coefficients of Utilization and Flux Distribution



\*For Other Lamp Types Apply Multiplier:

<b>Lamp</b>	<b>Mult.</b>
35W HPS	.24
50W HPS	.42
70W HPS	.67

Fixture: SPS-12P1LSXXX  
Lamp: 100 Watt High Pressure Sodium  
Lumens: 9,500 Initial

	Lumens	% of Lamp
Downward Street Side	2498	26.3
Downward House Side	2497	26.3
Downward Total	4995	52.6
Upward Street Side	1016	10.7
Upward House Side	1016	10.7
Upward Total	2032	21.4
Total Flux	7027	74.0

Mounting Height Ft.	Multiply Foot Candles by
8	1.56
10	1.00
11	0.83
12	0.69
14	0.59
16	0.51
18	0.44
20	0.39