

Product # \_\_\_\_\_ Type \_\_\_\_\_ Date \_\_\_\_\_

Project Name \_\_\_\_\_

Project Location \_\_\_\_\_ Prepared By \_\_\_\_\_

# Smart™ Canopy 150

## Smart™ Light Specifications

The 150 watt Smart™ Canopy is designed to replace HID light sources of up to 400 watts. This is accomplished with sealed high brightness light modules with precision control TIR type optics.

### Construction

Housing is die-formed made from low-copper 5052 aluminum, heavy duty, structurally rigid and vibration resistant. It has advanced, vortex air flow thermal management and a flexible modular design.

### Optics/Lens

The 100 watt Smart™ Canopy contains 3 - 50 watt IP67 sealed light modules that are easily replaceable. Modules are available in 30 degree, 45 degree (standard) 120 degree wide and 85x135 degree (extra-wide) beam patterns.

### Electrical

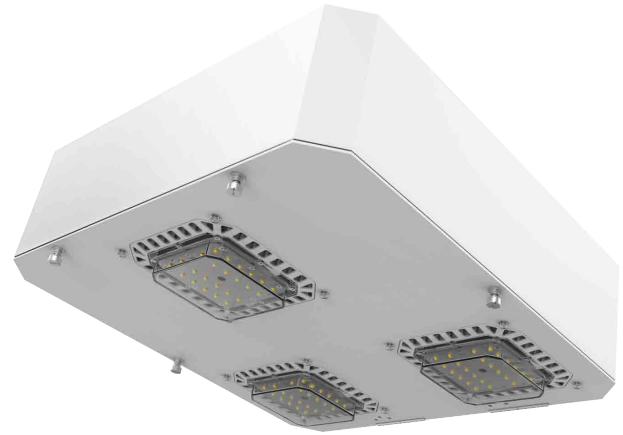
High power Cree XT-E LED source, with performance of greater than 100 lumens per watt. Standard Color Temperature 5000K, CRI of 70 or greater. Other optional color temp and CRI available on request. LED Drivers: UL/CSA recognized component to meet UL8750 & EN61347 (USR/CNR - E328335). Suitable for input power at 100-277VAC, Minimum power factor >0.95 with an operating temperature range of -22-131 degrees F / -30-55 degrees C. Dimmable and motion sensor control compatible.

### Finish

White finish is standard. Other optional finishes are available on request.

### Warranty and Certifications

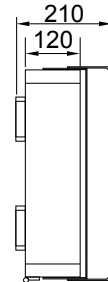
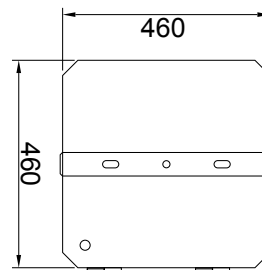
5 years for LED Light Engine and Driver, 7 years for housing. 50,000 hours @ 25°C L70 LED Illumination per LM-80. cULus Wet Locations in compliance with UL 1598 and CSA C22.2 NO. 250.0 standards. IP65 rated. Suitable for indoor/outdoor wet or damp location use. DLC listed and Lighting Facts.



### Dimensions

18.1 x 18.1 x 4.7 inches

EPA: 3.2



Weight: 18.7lbs. (8.5kg)



## Ordering Guide

MODEL	TOTAL LED POWER	CCT COLOR TEMP	LIGHT BEAM SPREAD	INPUT VAC	LIGHTING CONTROL	GLARE CONTROL	MOUNTING
SMC	150 150 = 150W	50 27-2700K* 30-3000K* 40-4000K* 50 - 5000K Standard *+/-350K	5 4 = NEMA 4HX4V 5 = NEMA 5HX5V 6 = NEMA 5HX7V 7 = NEMA 7HX7V	U U = Universal 100V to 277V 48 = 480V	D ND = Non Dimming D = Dimming	**Consult factory for available options	SM = Surface Mount H = Hook/Chain Mount P = Pendant Mount SC = Screw Mount U = Universal Hanging Bracket

Note: Due to continued efforts to improve our products, specifications are subject to change without notice.

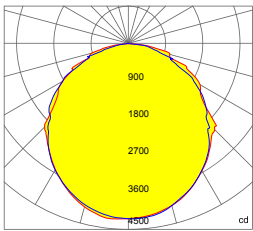


835 Industrial Drive, Elmhurst, IL 60126 708.681.4330 www.nslights.com

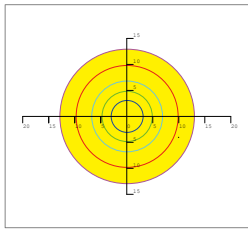
# Smart™ Canopy 150

## Photometrics

### 120 Degree Lens (clear) NEMA Type 7



— 0.0~180.0  
— 90.0~270.0



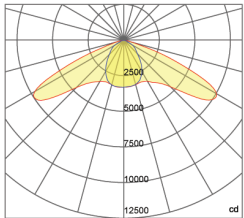
Mounting Hight 9m, 0 Tilt,  
50LUX-5LUX

#### Illumination-120 Degree Beaming Angle

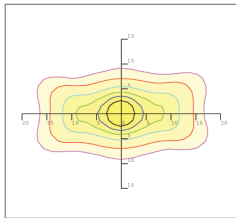
Height	Beam Diameter	LUX
6m	φ 21m	103LUX
7m	φ 24m	78LUX
8m	φ 28m	60LUX
9m	φ 31m	48LUX
10m	φ 35m	39LUX

Beam Angle (50% max)	120 DEG
Field Angle (10%)	150 DEG
Luminous Flux (IES)	14,244 lm
Light Efficacy (IES)	99 lm/W
NEMA Type	7H x 7V
BUG Rating	B3-U2-G2
UGR	24
Cutoff Classification	Cutoff

### 85/135 Degree Lens (clear frosted) NEMA Type 6



— 0.0~180.0  
— 90.0~270.0



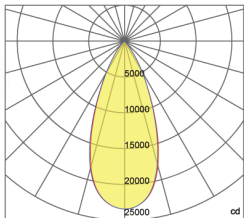
Mounting Hight 7m, 0 Tilt,  
50LUX-5LUX

#### Illumination-85/135 Degree Beaming Angle

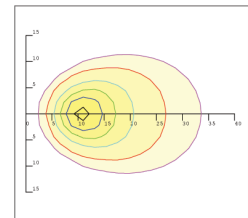
Height	Rectangular Light Spot	LUX
6m	11x29m	88LUX
7m	13x34m	65LUX
8m	15x39m	50LUX
9m	16x43m	40LUX
10m	18x48m	32LUX

Beam Angle (50% max)	85x135 DEG
Field Angle (10%)	130x150 DEG
Luminous Flux (IES)	13,600 lm
Light Efficacy (IES)	92.5 lm/W
NEMA Type	7H x 7V
BUG Rating	B3-U2-G3
UGR	17/30
IES Classification	Type II
Cutoff Classification	Semi-Cutoff

### 45 Degree Lens NEMA Type 5



— 0.0~180.0  
— 90.0~270.0



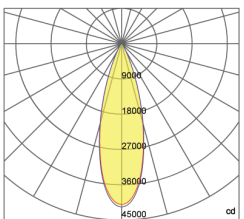
Mounting Hight 11m, 60 Tilt,  
50LUX-5LUX

#### Illumination-45 Degree Beaming Angle

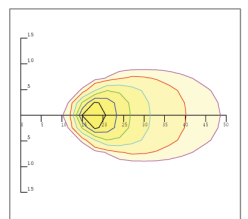
Height	Beam Diameter	LUX
15m	φ 12m	104LUX
20m	φ 17m	58LUX
25m	φ 21m	37LUX
30m	φ 25m	26LUX
35m	φ 29m	19LUX

Beam Angle (50% max)	45 DEG
Field Angle (10%)	73 DEG
Luminous Flux (IES)	14,432 lm
Light Efficacy (IES)	96 lm/W
NEMA Type	5H x 5V
BUG Rating	B5-U1-G1
UGR	13
Cutoff Classification	Cutoff

### 30 Degree Lens NEMA Type 3



— 0.0~180.0  
— 90.0~270.0



Mounting Hight 15m, 60 Tilt,  
50LUX-5LUX

#### Illumination-30 Degree Beaming Angle

Height	Beam Diameter	LUX
20m	φ 11m	141LUX
25m	φ 13m	90LUX
30m	φ 16m	63LUX
35m	φ 19m	46LUX
40m	φ 21m	35LUX

Beam Angle (50% max)	35 DEG
Field Angle (10%)	48 DEG
Luminous Flux (IES)	14,215 lm
Light Efficacy (IES)	93 lm/W
NEMA Type	3H x 3V
BUG Rating	B5-U1-G0
UGR	13
Cutoff Classification	Cutoff

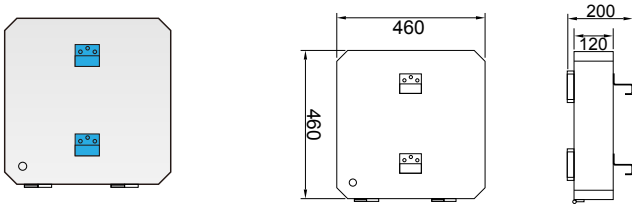


**NORTHSTAR**  
LIGHTING

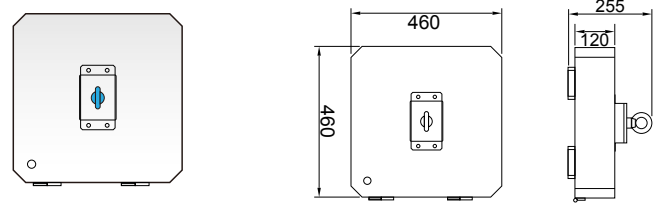
# Smart™ Canopy 150

Mounting Options - Dimensions Shown are in millimeters

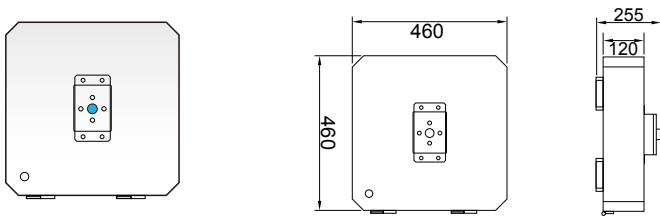
## Surface Mount



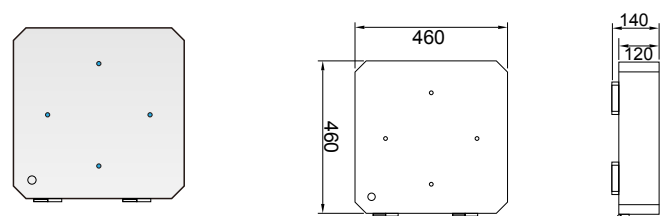
## Hook/Chain Mount



## Pendant Mount(1/2" or 3/4" NPT)



## Screw Mount



## Universal Hanging Bracket

