

Product # _____ Type _____ Date _____

Project Name _____

Project Location _____ Prepared By _____

Smart™ Area

Smart™ Light Specifications

The 100 watt Smart™ Area is designed to replace HID light sources of up to 250 watts. This is accomplished with sealed high brightness light modules with precision control TIR type optics.

Construction

Housing is die-formed made from low-copper 5052 aluminum, heavy duty, structurally rigid and vibration resistant. Heatsink fins are 0.040" thick made from low copper aluminum 5052 alloy with maximum contact with the housing for maximum heat dissipating surface area for the efficient cooler operation. Five available mounting options. Suitable for Wet Locations.

Optics/Lens

The 100 watt Smart™ Area contains 1 x 100 watt IP67 sealed light module which is easily replaceable. LED Modules are available in TypeII TypeIII and TypeV distribution patterns.

Electrical

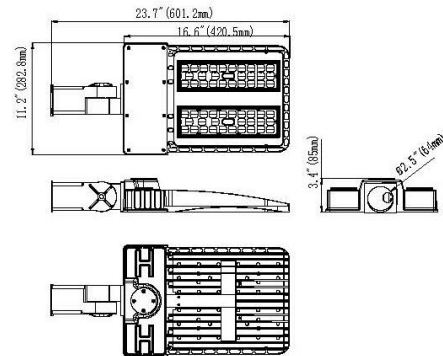
High power LED source, with performance of greater than 100lpw (lumens per watt). Available in range of Color Temperature 2700K-5000K, CRI of 70 or greater. LED Drivers: UL/CSA recognized component to meet UL8750 & EN61347 (USR/CNR - E328335). Suitable for input power at 100-277VAC, Minimum power factor >0.95 with an operating temperature range of -22-140 degrees F / -30C to +55C. Dimmable and motion sensor control compatible.

Finish

Dark Bronze finish. Other optional colors available on request.

Warranty and Certifications

5 year limited warranty for LED Light Engine and Driver, 7 years for housing. 50,000 hours @ 25°C L70 LED Illumination per LM-80. cULus Wet Locations in compliance with UL 1598 and CSA C22.2 NO. 250.0 standards. IP65, IP67 upgrade option. Suitable for indoor/outdoor wet or damp location use. DLC listed and Lighting Facts.



Fixture EPA: .9 sq. ft.

Weight: 22 lbs.



Ordering Guide

MODEL	TOTAL LED POWER	CCT COLOR TEMP	LIGHT BEAM SPREAD	INPUT VAC	LIGHTING CONTROL	GLARE CONTROL	MOUNTING TYPE
SMA-V	100	50	2	U	D		4
	100 = 100W	50 – 5000K (standard) 40 – 4000K 30 – 3000K 27 – 2700K	2 = Type II 3 = Type III 5 = Type V	U = Universal 100V to 277V 34 = 347V 48 = 480V	D = Dimming ND = Non Dimming PC = Photo Control	**Consult factory for available options	4 - adjustable knuckle/slipfitter 6 - arm mount 7 - wall mount RP - Round Pole Adapter TR - Adjustable Trunnion

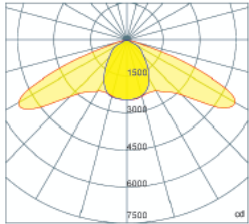
Note: Due to continued efforts to improve our products, specifications are subject to change without notice.



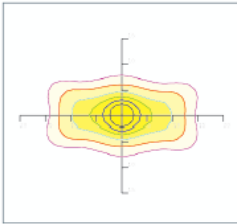
835 Industrial Drive, Elmhurst, IL 60126 708.681.4330 www.nslights.com

Photometrics

TYPE II LENS



— 0.0~180.0
— 90.0~270.0



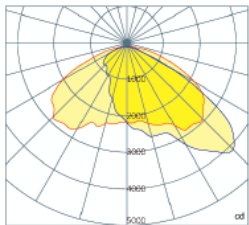
Mounting Hight 6m, 0 Tilt,
50LUX-5LUX

Illumination-Type II Lens Beaming Angle

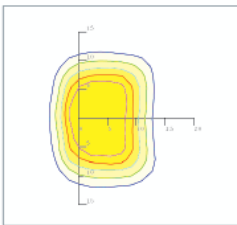
Height	Rectangular Light Spot	LUX
5m	9x24m	82LUX
6m	11x29m	60LUX
7m	13x34m	45LUX
8m	14x39m	35LUX
9m	15x43m	28LUX

Luminous Flux (IES)	10,158 lm
Light Efficacy (IES)	101 lm/W
IES Classification	Type II
BUG Rating	B3-U2-G3
Cutoff Classification	Semi Cutoff

TYPE III LENS



— 0.0~180.0
— 90.0~270.0



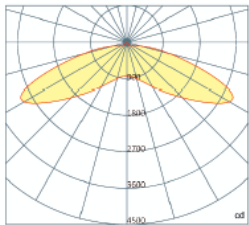
Mounting Hight 9m, 0 Tilt,
50LUX-5LUX

Illumination-Type III Lens Beaming Angle

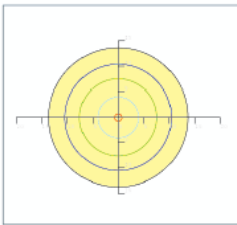
Height	Rectangular Light Spot	LUX
5m	9x24m	86LUX
6m	11x29m	64LUX
7m	13x34m	49LUX
8m	14x39m	38LUX
9m	15x43m	30LUX

Luminous Flux (IES)	10,158 lm
Light Efficacy (IES)	101 lm/W
IES Classification	Type III
BUG Rating	B2-U2-G2
Cutoff Classification	Cutoff

TYPE V LENS



— 0.0~360.0



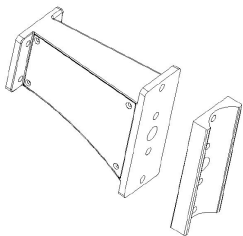
Mounting Hight 6m, 0 Tilt,
50LUX-5LUX

Illumination-Type V Lens Beaming Angle

Height	Beam Diameter	LUX
5m	φ 23m	77LUX
6m	φ 28m	57LUX
7m	φ 31m	44LUX
8m	φ 38m	34LUX
9m	φ 41m	27LUX

Luminous Flux (IES)	10,158 lm
Light Efficacy (IES)	101 lm/W
IES Classification	Type V
BUG Rating	B3-U0-G3
Cutoff Classification	Full Cutoff

Round Pole Adapter



Trunnion Mount



Photocell

