

Sirius™ 200W LED Flood

Sirius™ LED Flood Light Specifications

The Sirius™ 200 watt LED Flood Light is designed to replace HID light sources. This is accomplished with sealed high brightness LED light modules and precision control TIR type optics.

Construction

The Sirius™ 200 has an innovative thermal design with a thin plate of high purity low copper aluminum applied to create a hybrid cooling system. It also has an ultra slim and light weight design.

Optics/Lens

The 200 watt LED Floodlight utilizes a single IP66 sealed light module which is field replaceable. Available in 15 degree, 20 degree, 30 degree, 45 degree and 60 degree beam patterns. NEMA types 1 through 6.

Electrical

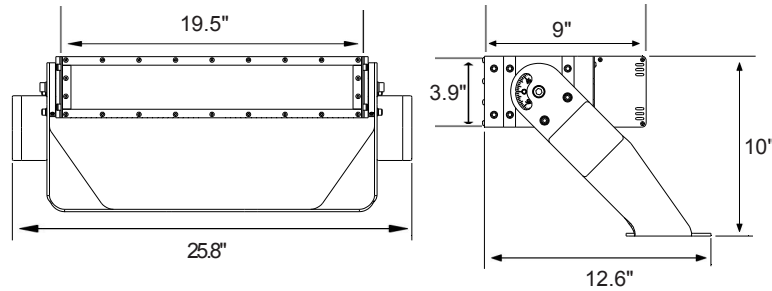
Performance greater than 120 lumens per watt output. Standard Color Temperature 5600K, CRI of 70 or greater. Other optional color temp and CRI available on request. LED Drivers: UL/CSA recognized component to meet UL1449(2CA) & EN61643-11 (Class II). Suitable for input power at 120-277 VAC. Minimum power factor over 0.9 with an operating temperature range of -22F-113F (-30C-45C). Available dimming: 1-10V standard (PWM dimming consult factory).

Product Applications

The Sirius™ 200 is designed for use in outdoor stadiums, indoor arenas, field houses, natatoriums, gymnasiums, site lighting, parking garages, food processing, warehouses, and for a variety of different manufacturing applications.

Warranty and Certifications

5 years for LED Light Engine and Driver, 7 years for housing. 50,000 hours @ 25 degrees C L70 LED Illumination per LM-80. cETLus wet locations in compliance with UL 1598 and CSA C22.2 NO. 250.0 standards. IP66 rated. Suitable for indoor/outdoor wet or damp location use. DLC listed.



Weight: 13lbs /5.9kg

EPA: 1.24 sq ft



Ordering Guide

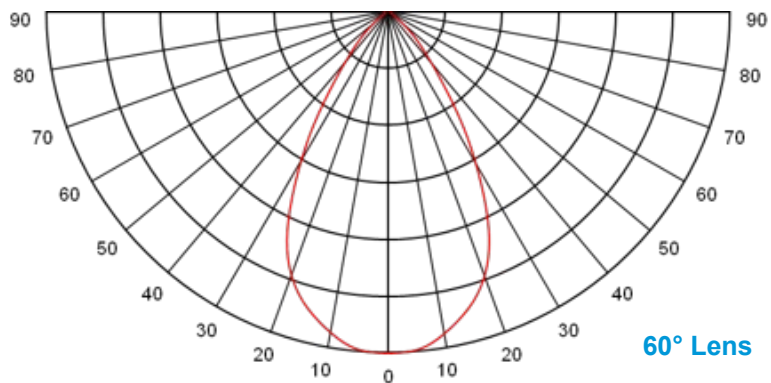
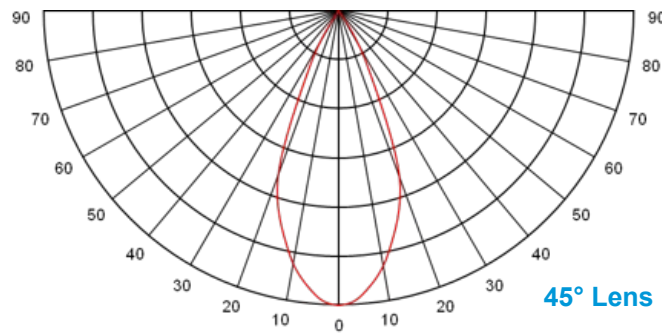
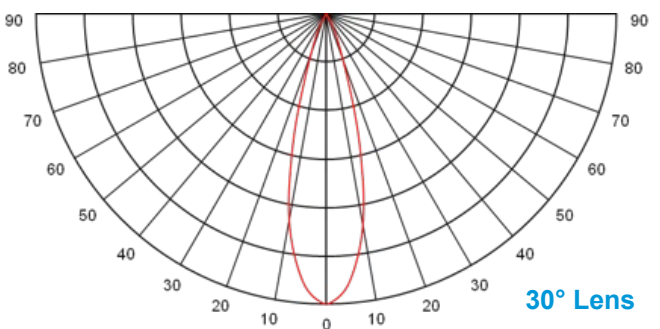
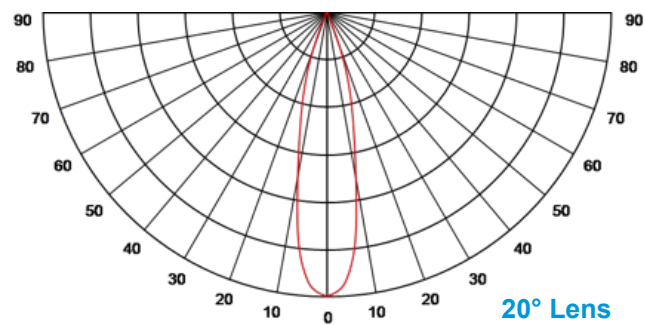
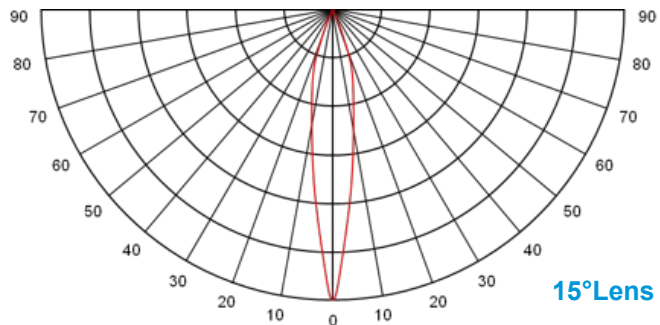
MODEL	TOTAL LED POWER	SERIES	CCT COLOR TEMP	LIGHT BEAM SPREAD	INPUT VAC	LIGHTING CONTROL	GLARE CONTROL
NSLF	200 = 200W	TG	27 - 2700K* 30 - 3000K* 35 - 3500K* 40 - 4000K* 56 - Standard *+/-350K	2 = NEMA - Type 2 3 = NEMA - Type 3 4 = NEMA - Type 4 5 = NEMA - Type 5 6 = NEMA - Type 6	U = Universal 120V to 277V 48 = 480V* *Consult factory for 48	ND = Non Dimming D = Dimming	**Consult factory for available options

Note: Due to continued efforts to improve our products, specifications are subject to change without notice.



Sirius™ 200W LED Flood

Photometrics



Sirius™ 200W LED Flood

Typical Aiming Angles

