

Sierra Line (SSCT)

(SSCT)

Sierra Line Specification

Sierra Line rectangular cut-off luminaire combines all the design features required for area lighting. Available in 250 to 1000 watt high pressure sodium lamp and 250 to 1000 watt metal halide lamp. Available with (specify) 120, 208, 240, 277, 480 volt, or 4MT (120,208,240,277V) 60Hz ballast. Luminaire shall be completely pre-wired for ease of installation.

Basic Product Description

One-piece aluminum housing with welded and finished corners. Aluminum lens frame has two captive stainless door fasteners for easy access. A one piece E.P.D.M. high temperature gasket tightly seals the lens and frame against dust and moisture. Ballast is mounted to the housing reinforcing plate. Available with 6" or 12" aluminum mounting arm, or adjustable knuckle, or wall mounting bracket.

Ballast Characteristics

The Sierra Line contains a long lasting, U.L. recognized High Power Factor (HPF) constant wattage auto-transformer (CWA) type ballast. All ballasts are designed for -20° operation and are mounted to the housing reinforcing plate.

Reflector Assembly

The Sierra line has two types of reflectors available. There is a Type 3 and the Forward Throw type. The Forward Throw is a field rotatable reflector and is only available in the 1000 watt units.

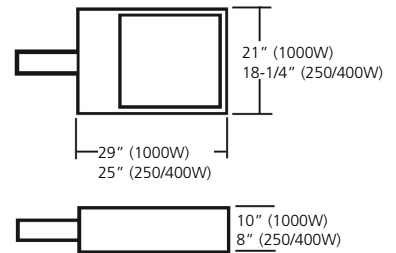
Suggested Applications

Parking areas, tennis courts, and car lots where superior cut-off controlled lighting is required.



Suitable for wet locations
Lamp included

Effective Projected Area
EPA = 1.6 SQ. FT. (250/400W)
2.0 SQ. FT. (1000W)
WEIGHT = 40-60 lbs



Accessories/Mounting Brackets, see Accessory Page

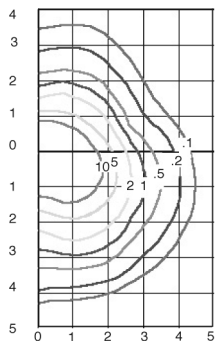


Ordering Example						
Unit	Wattage	Photometrics	Mounting	Lamp Style	Voltage	Ballast Style
SSCT	8	3	6	H	120	H
Sierra Line	4 - 250W	3 - Type III	4- Knuckle Mount	H - Metal Halide	120	H - High Power Factor
	6 - 400W	F - Forward Throw	6- Arm Mount	LS - High Pressure Sodium	208	
	8 - 1000W		9- Wall Mount	PS - Pulse Start Metal halide	240	
	320 - 320W				277	
	350 - 350W				480	
					4MT- (120, 208, 240, 277V)	
			Accessories			
			SIF - Single Inline Fuse			
			DIF - Double Inline Fuse			
			PE - Photocell			
			RPC - Photocell Receptacle			
			HSS - House Side Shield			
			PL - Polycarbonate Shield			

CSA Certification - consult factory.

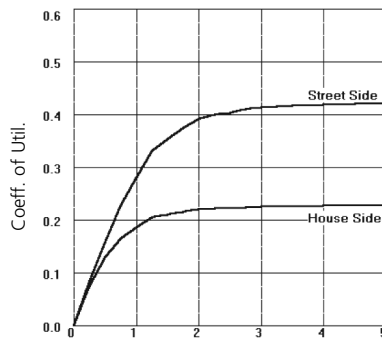
Photometrics

Isofootcandle Lines of Illumination



Distance in Units of Mounting Heights
Values based on 10 ft. mounting height

Coefficients of Utilization and Flux Distribution



Street Width/Mounting Height

Fixture: SSCT-836LS
Lamp: 1000 Watt Clear High Pressure Sodium
Lumens: 140,000 Initial

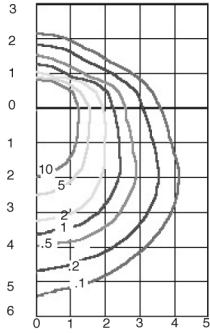
	Lumens	% of Lamp
Downward Street Side	58931	42.1
Downward House Side	32021	22.9
Downward Total	90952	65.0
Upward Street Side	0	.0
Upward House Side	0	.0
Upward Total	0	.0
Total Flux	90952	65.0



OUTDOOR LIGHTING—Area Lighting—Sierra Line

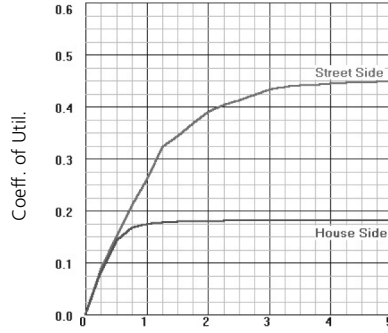
Sierra Line (SSCT)

Isofootcandle Lines of Illumination



Distance in Units of Mounting Heights
Values based on 10 ft. mounting height

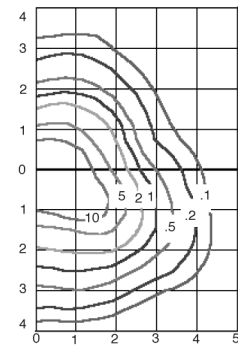
Coefficients of Utilization and Flux Distribution



Fixture: SSCT-8F6LS
Lamp: 1000 Watt Clear High Pressure Sodium
Lumens: 140,000 Initial

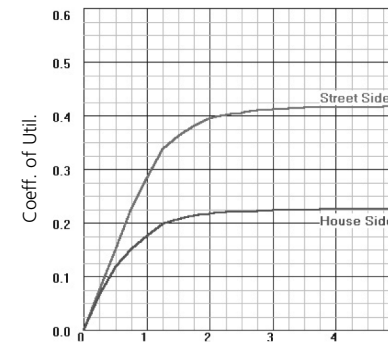
	Lumens	% of Lamp
Downward Street Side	63043	45.0
Downward House Side	25355	18.1
Downward Total	88398	63.1
Upward Street Side	0	.0
Upward House Side	0	.0
Upward Total	0	.0
Total Flux	88398	63.1

Isofootcandle Lines of Illumination



Distance in Units of Mounting Heights
Values based on 10 ft. mounting height

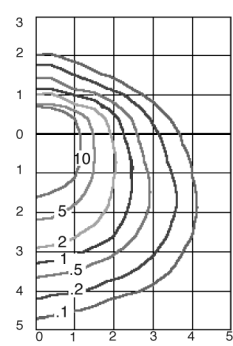
Coefficients of Utilization and Flux Distribution



Fixture: SSCT-836H
Lamp: 1000 Watt Clear Metal Halide
Lumens: 107,800 Initial

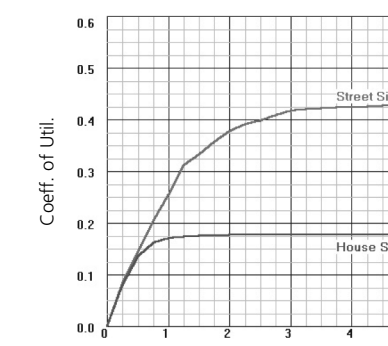
	Lumens	% of Lamp
Downward Street Side	44974	41.7
Downward House Side	24490	22.7
Downward Total	69464	64.4
Upward Street Side	0	.0
Upward House Side	0	.0
Upward Total	0	.0
Total Flux	69464	64.4

Isofootcandle Lines of Illumination



Distance in Units of Mounting Heights
Values based on 10 ft. mounting height

Coefficients of Utilization and Flux Distribution



Fixture: SSCT-8F6H
Lamp: 1000 Watt Clear Metal Halide
Lumens: 107,800 Initial

	Lumens	% of Lamp
Downward Street Side	46296	42.9
Downward House Side	19181	17.8
Downward Total	65477	60.7
Upward Street Side	0	.0
Upward House Side	0	.0
Upward Total	0	.0
Total Flux	65477	60.7

Mounting Height Ft.	Multiply Foot Candles by
16	1.56
18	1.23
20	1.00
22	0.83
24	0.69
26	0.59
28	0.51
30	0.44
32	0.39
35	0.33
40	0.25