

Product # _____ Type _____ Date _____
 Project Name _____
 Project Location _____ Prepared By _____

Smart™ Area 300

Smart™ Light Specifications

The 300 watt Smart™ Area is designed to replace HID light sources of up to 1000 watts. This is accomplished with sealed high brightness light modules with precision control TIR type optics.

Construction

Housing is die-formed made from low-copper 5052 aluminum, heavy duty, structurally rigid and vibration resistant. Heatsink fins are 0.040" thick made from low copper aluminum 5052 alloy with maximum contact with the housing for maximum heat dissipating surface area for the efficient cooler operation. 3 available mounting options.

Optics/Lens

The 300 watt Smart™ Area contains 6 - 50 watt IP67 sealed light modules and are easily replaceable. Modules are available in both 45 degree (standard) and 85x135 degree (optional) beam patterns.

Electrical

High power Cree XT-E LED source, with performance of greater than 90 lumens per watt. Available in range of Color Temperature 4500-5500K, CRI of 70 or greater. LED Drivers: UL/CSA recognized component to meet UL8750 & EN61347 (USR/CNR - E328335). Suitable for input power at 100-277VAC, Minimum power factor >0.95 with an operating temperature range of -22-140 degrees F / -30C to +55C. Dimmable and motion sensor control compatible.

Finish

Gloss Black finish is standard. Other optional finishes available on request.

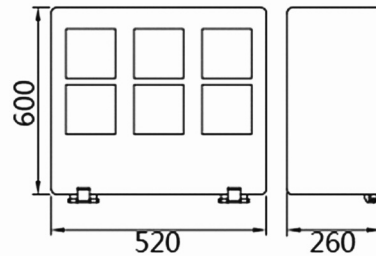
Warranty and Certifications

5 years for LED Light Engine and Driver, 7 years for housing. 50,000 hours @ 25°C L70 LED Illumination per LM-80. cULus Wet Locations in compliance with UL 1598 and CSA C22.2 NO. 250.0 standards. IP65, IP67 upgrade option. Suitable for indoor/outdoor wet or damp location use. DLC listed and Lighting Facts.



Dimensions

23.6 x 20.5 x 10.2 inches



Fixture EPA: 4.7 sq. ft.
 Weight: 59.5 lbs.



Ordering Guide

MODEL	TOTAL LED POWER	CCT COLOR TEMP	LIGHT BEAM SPREAD	INPUT VAC	LIGHTING CONTROL	GLARE CONTROL	MOUNTING TYPE
SMA	300 300 = 300W	50 - 5000K (standard) 40 - 4000K 30 - 3000K 27 - 2700K	2 2 = Type II 3 = Type III 4 = Type IV 5 = Type V	U U = Universal 100V to 277V 48 = 480V	D D = Dimming	**Consult factory for available options	4 4 - adjustable knuckle/slipfitter 6 - arm mount

Note: Due to continued efforts to improve our products, specifications are subject to change without notice.

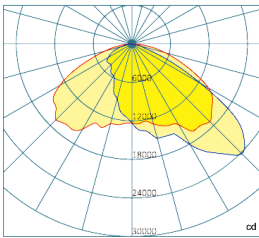


835 Industrial Drive, Elmhurst, IL 60126 708.681.4330 www.nslights.com

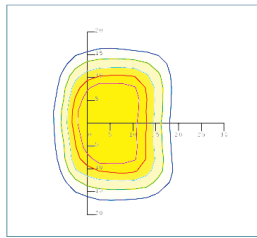
Smart™ Area 300

Photometrics

TYPE III LENS



— 0.0~180.0
— 90.0~270.0



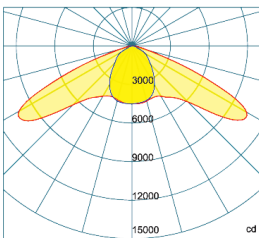
Mounting Hight 13m, 0 Tilt,
50LUX-5LUX

Illumination-Type III Lens Beaming Angle

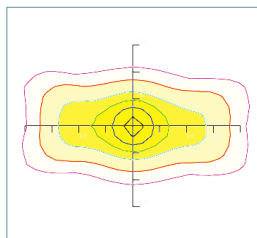
Height	Rectangular Light Spot	LUX
5m	9x24m	82LUX
6m	11x29m	60LUX
7m	13x34m	45LUX
8m	14x39m	35LUX
9m	15x43m	28LUX

Luminous Flux (IES)	30,137 lm
Light Efficacy (IES)	100 lm/W
IES Classification	Type III
BUG Rating	B3-U2-G3
Cutoff Classification	Full Cutoff

TYPE II LENS



— 0.0~180.0
— 90.0~270.0



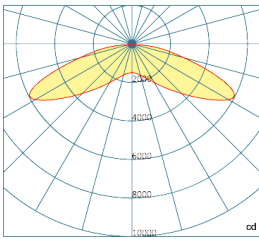
Mounting Hight 9m, 0 Tilt,
50LUX-5LUX

Illumination-Type II Lens Beaming Angle

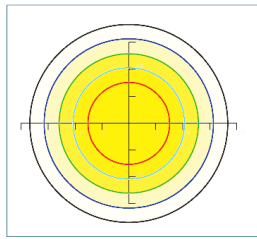
Height	Rectangular Light Spot	LUX
7m	13x34m	84LUX
8m	15x39m	65LUX
9m	16x43m	52LUX
10m	18x48m	42LUX
11m	20x53m	35LUX

Luminous Flux (IES)	30,137 lm
Light Efficacy (IES)	100 lm/W
IES Classification	Type II
BUG Rating	B3-U2-G3
Cutoff Classification	Semi Cutoff

TYPE V LENS



— 0.0~360.0



Mounting Hight 8m, 0 Tilt,
50LUX-5LUX

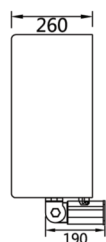
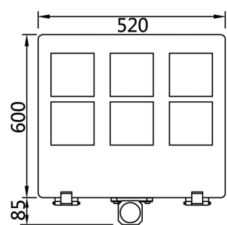
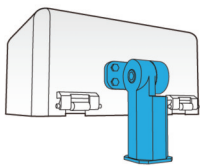
Illumination-Type V Lens Beaming Angle

Height	Beam Diameter	LUX
7m	φ32m	86LUX
8m	φ37m	67LUX
9m	φ41m	55LUX
10m	φ47m	44LUX
11m	φ51m	37LUX

Luminous Flux (IES)	30,137 lm
Light Efficacy (IES)	100 lm/W
IES Classification	Type V
BUG Rating	B4-U0-G4
Cutoff Classification	Semi Cutoff

Mounting Options

Adjustable Knuckle/Slip Fitter
(fits 2" to 2-1/2" pipe or tenon)



Arm Mount

