

Product # \_\_\_\_\_ Type \_\_\_\_\_ Date \_\_\_\_\_

Project Name \_\_\_\_\_

Project Location \_\_\_\_\_ Prepared By \_\_\_\_\_

# Smart™ Area 150

## Smart™ Light Specifications

The 150 watt Smart™ Area is designed to replace HID light sources of up to 400 watts. This is accomplished with sealed high brightness light modules with precision control TIR type optics.

### Construction

Housing is die-formed made from low-copper 5052 aluminum, heavy duty, structurally rigid and vibration resistant. Heatsink fins are 0.040" thick made from low copper aluminum 5052 alloy with maximum contact with the housing for maximum heat dissipating surface area for the efficient cooler operation. 3 available mounting options.

### Optics/Lens

The 150 watt Smart™ Area contains 3 - 50 watt IP67 sealed light modules and are easily replaceable. Modules are available in both 45 degree (standard) and 85x135 degree (optional) beam patterns.

### Electrical

High power Cree XTE LED source, with performance of greater than 100 lumens per watt. Available in range of Color Temperature 4500-5500K, CRI of 70 or greater. LED Drivers: UL/CSA recognized component to meet UL8750 & EN61347 (USR/CNR - E328335). Suitable for input power at 100-277VAC, Minimum power factor >0.95 with an operating temperature range of -22-140 degrees F / -30C to +55C. Dimmable and motion sensor control compatible.

### Finish

Gloss Black finish is standard. Other optional finishes available on request.

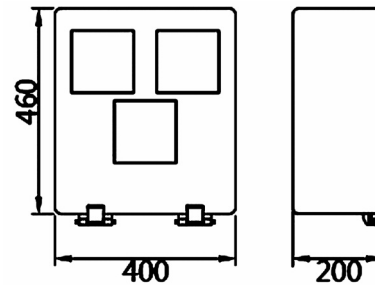
### Warranty and Certifications

5 years for LED Light Engine and Driver, 7 years for housing. 50,000 hours @ 25°C L70 LED Illumination per LM-80. cULus Wet Locations in compliance with UL 1598 and CSA C22.2 NO. 250.0 standards. IP65, IP67 upgrade option. Suitable for indoor/outdoor wet or damp location use. DLC listed and Lighting Facts.



### Dimensions

15.7 x 18.1 x 7.9 inches



**Fixture EPA: 2.8 sq. ft.**

Weight: 33.1 lbs.



## Ordering Guide

MODEL	TOTAL LED POWER	CCT COLOR TEMP	LIGHT BEAM SPREAD	INPUT VAC	LIGHTING CONTROL	GLARE CONTROL	MOUNTING TYPE
SMA	150	50 - 5000K (standard)	2	U	D		4
	150 = 150W	50 - 5000K (standard) 40 - 4000K 30 - 3000K 27 - 2700K	2 = Type II 3 = Type III 4 = Type IV 5 = Type V	U = Universal 100V to 277V 48 = 480V	D = Dimming	**Consult factory for available options	4 - adjustable knuckle/ slipfitter 6 - arm mount

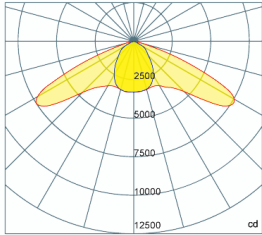
Note: Due to continued efforts to improve our products, specifications are subject to change without notice.



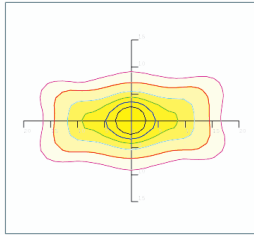
# Smart™ Area 150

## Photometrics

### TYPE II LENS



— 0.0~180.0  
— 90.0~270.0



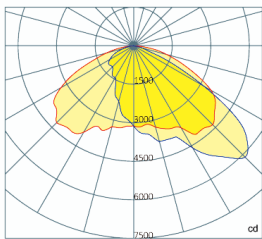
Mounting Height 7m, 0 Tilt,  
50LUX-5LUX

#### Illumination-Type II Lens Beaming Angle

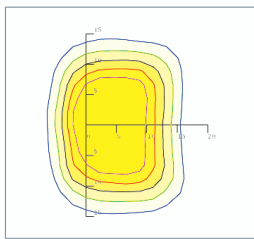
Height	Rectangular Light Spot	LUX
6m	11×29m	88LUX
7m	13×34m	65LUX
8m	15×38m	50LUX
9m	16×43m	40LUX
10m	18×48m	32LUX

Luminous Flux (IES)	15,238 lm
Light Efficacy (IES)	101 lm/W
IES Classification	Type II
BUG Rating	B3-U2-G3
Cutoff Classification	Semi Cutoff

### TYPE III LENS



— 0.0~180.0  
— 90.0~270.0



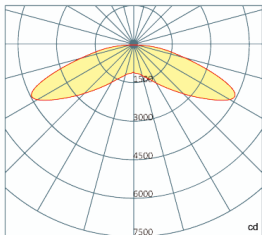
Mounting Height 11m, 0 Tilt,  
50LUX-5LUX

#### Illumination-Type III Lens Beaming Angle

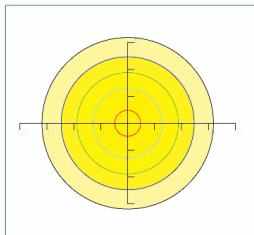
Height	Rectangular Light Spot	LUX
5m	9×24m	82LUX
6m	11×29m	60LUX
7m	13×34m	45LUX
8m	14×39m	35LUX
9m	15×43m	28LUX

Luminous Flux (IES)	15,238 lm
Light Efficacy (IES)	101 lm/W
IES Classification	Type III
BUG Rating	B3-U2-G2
Cutoff Classification	Full Cutoff

### TYPE V LENS



— 0.0~360.0



Mounting Height 7m, 0 Tilt,  
50LUX-5LUX

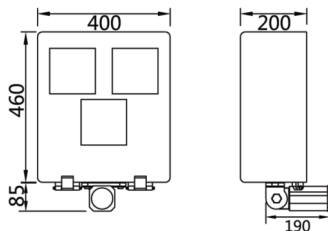
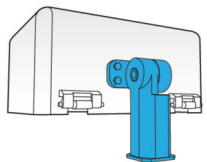
#### Illumination-Type V Lens Beaming Angle

Height	Beam Diameter	LUX
6m	φ 28m	84LUX
7m	φ 32m	64LUX
8m	φ 37m	50LUX
9m	φ 42m	40LUX
10m	φ 47m	32LUX

Luminous Flux (IES)	15,238 lm
Light Efficacy (IES)	101 lm/W
IES Classification	Type V
BUG Rating	B4-U0-G3
Cutoff Classification	Semi Cutoff

## Mounting Options

Adjustable Knuckle/Slip Fitter  
(fits 2" to 2-1/2" pipe or tenon)



Arm Mount

