

Contrast C

THORN

A high performance asymmetrical floodlight available in three sizes with two types of reflector and a wide selection of refractors and accessories (UL/CSA listed for indoor/outdoor use, wet location)

Design:

Additional options are available for sports, wide building façades and street lighting.

- Neat appearance retained across range, with integral ballast for lamps from 39W to 400W
- Front glasses and refractors can be rotated to give alignment of the beam profile to suit the application
- Aiming simplified by indicator on yoke, with facility to lock memory position
- Yoke mount allows base support or suspension
- Hinged frame for easy access to light source. Lamp replacement possible without disturbing aiming angle or removing attachments
- Brackets available to offer mounting on vertical surface and retain full adjustment in both planes
- All accessories are stackable



Size 2



Size 1



Size 0

Materials/Finish

Body: Copper free die-cast aluminum, textured grey powder coated finish (close to RAL 9007). Alternative RAL colors on request. Front lenses: 0.16" tempered glass. Attachment retaining screws: Nickel plated brass. Reflector: Specular MH or satin HPS anodized aluminum.

Installation/Mounting

Floodlight is fully adjustable on a short yoke. Aiming simplified by indicator on yoke, locked via central 0.31" Ø Allen screw. Easy access to lamp via two Allen screws. Lamp replacement possible without removing attachments.

Ballast compartment, with rear access panel, fixed below body. Entry via two Allen screws. Cable gland for 0.29"-0.51" Ø cable. Additional knock out provided for through wiring.

Specification

To specify state. Asymmetrical distribution floodlight, in choice of 3 sizes to accommodate 39W to 400W lamps, IP65 protected, integral ballast, and optional control attachments. As Thorn Contrast C.

Certification

Luminaire shall be certified for Indoor/Outdoor use, wet location, to meet UL 1598 standards and CSA Std. C22.2 NO.250.

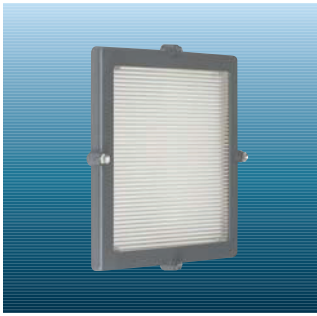


Britannica Building

Lighting Design: Shuler Shook

Photography: Volkan Yuktisel

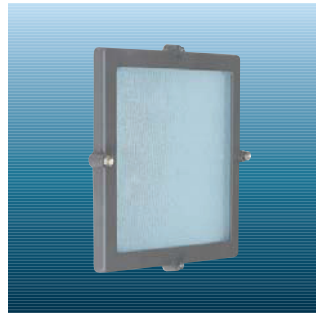
Refractors



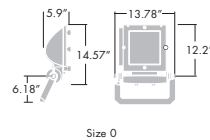
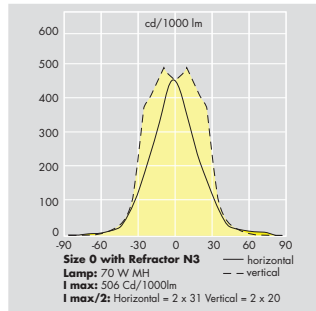
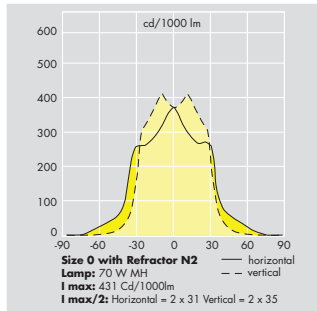
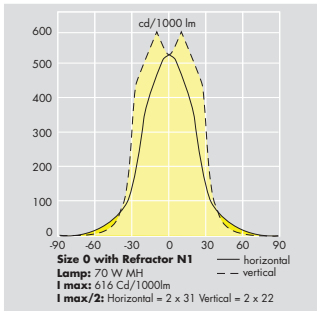
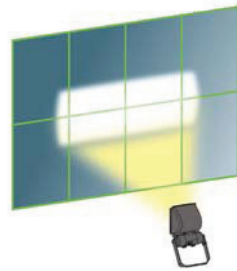
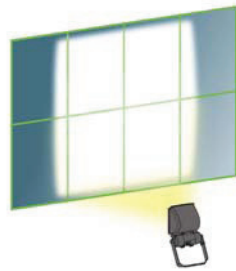
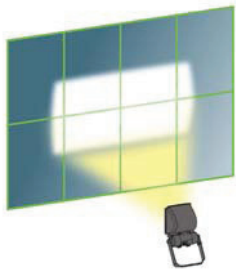
No.1



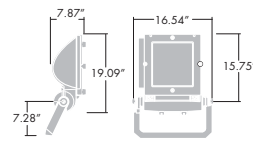
No.2



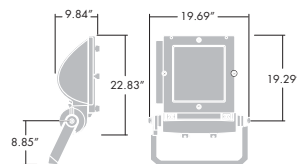
No.3



Size 0



Size 1



Size 2

Ordering Guide (Size 0 Small)

Description	Size 0 Small	Wattage	Lamp Type	Base	Fixture Shell SAP Code
CON	C0	39	MH	G12	96005832 Symmetric
CON	C0	50	MH	G12	96005832 Symmetric
CON	C0	70	MH	G12	96005832 Symmetric
CON	C0	39	MH	MED	96005832 Symmetric
CON	C0	50	MH	MED	96005832 Symmetric
CON	C0	70	MH	MED	96005832 Symmetric
CON	C0	39	MH	G12	96005830 Asymmetric
CON	C0	50	MH	G12	96005830 Asymmetric
CON	C0	70	MH	G12	96005830 Asymmetric
CON	C0	39	MH	MED	96005830 Asymmetric
CON	C0	50	MH	MED	96005830 Asymmetric
CON	C0	70	MH	MED	96005830 Asymmetric
CON	C0	39	HPS	MED	96005832 Symmetric
CON	C0	50	HPS	MED	96005832 Symmetric
CON	C0	70	HPS	MED	96005832 Symmetric
CON	C0	39	HPS	MED	96005830 Asymmetric
CON	C0	50	HPS	MED	96005830 Asymmetric
CON	C0	70	HPS	MED	96005830 Asymmetric

Note: HPS fixtures available with medium base only.

Ordering Guide (Size 1 Medium)

Description	Size 1 Small	Wattage	Lamp Type	Base	Fixture Shell SAP Code
CON	C1	70	MH	G12	9600244 Symmetric
CON	C1	100	MH	G12	9600244 Symmetric
CON	C1	150	MH	G12	9600244 Symmetric
CON	C1	70	MH	G12	96002448 Asymmetric
CON	C1	100	MH	G12	96002448 Asymmetric
CON	C1	150	MH	G12	96002448 Asymmetric
CON	C1	70	MH	MED	9600244 Symmetric
CON	C1	100	MH	MED	9600244 Symmetric
CON	C1	150	MH	MED	9600244 Symmetric
CON	C1	70	MH	MED	96002448 Asymmetric
CON	C1	100	MH	MED	96002448 Asymmetric
CON	C1	150	MH	MED	96002448 Asymmetric
CON	C1	70	HPS	MED	9600244 Symmetric
CON	C1	100	HPS	MED	9600244 Symmetric
CON	C1	150	HPS	MED	9600244 Symmetric
CON	C1	70	HPS	MED	96002448 Asymmetric
CON	C1	100	HPS	MED	96002448 Asymmetric
CON	C1	150	HPS	MED	96002448 Asymmetric

Ordering Guide (Size 2 Large)

Description	Size Small	Wattage	Lamp Type	Base	Fixture Shell SAP Code
CON	C2	175	MH	MOG	96005827 Symmetric
CON	C2	250	MH	MOG	96005827 Symmetric
CON	C2	400	MH	MOG	96005827 Symmetric
CON	C2	175	MH	MOG	96005824 Asymmetric
CON	C2	250	MH	MOG	96005824 Asymmetric
CON	C2	400	MH	MOG	96005824 Asymmetric
CON	C2	150	MH	MOG	96005827 Symmetric
CON	C2	250	MH	MOG	96005827 Symmetric
CON	C2	400	MH	MOG	96005827 Symmetric
CON	C2	150	MH	MOG	96005824 Asymmetric
CON	C2	250	MH	MOG	96005824 Asymmetric
CON	C2	400	MH	MOG	96005824 Asymmetric

Attachments		Size 0		Size 1		Size 2	
		Weight (lb)	SAP Code	Weight (lb)	SAP Code	Weight (lb)	SAP Code
Color Filters							
CONTRAST C FILTER/BLU	BLUE	1.1	96002491	2.86	96002451	3.75	96002428
CONTRAST C FILTER/GRN	GREEN	1.1	96002492	2.86	96002452	3.75	96002427
CONTRAST C FILTER/RED	RED	1.1	96005835	2.86	96002454	3.75	96002429
CONTRAST C FILTER/YEL	YELLOW	1.1	96005834	2.86	96002453	3.75	96002430
Refractors							
CONTRAST C R1	NO 1	1.98	96002497	2.86	96002459	4.2	96002423
CONTRAST C R2	NO 2	2.2	96002498	3.53	96002460	4.85	96002424
CONTRAST C R3	NO 3	1.1	96002499	3.08	96002461	4.85	96002425
CONTRAST C AGS (x1)*	BARN DOOR*	0.66	96002507	1.32	96002471	1.32	96002438
CONTRAST C LV	FIXED LOUVRE	0.44	96002509	2.2	96002470	2.65	96002416
CONTRAST C LV/AJ	ADJUSTABLE LOUVRE	1.1	96005836	2.2	96005842	2.2	96005829
CONTRAST C WG	WIRE GUARD	1.1	96002510	2.421	96002472	1.1	96002432
CONTRAST C FILTER/FR	SAND BLASTED GLASS	2.2	96002513	3.08	96005823	4.41	96002426
CONTRAST C VS	VISOR	0.66	96002515	1.54	96002517	2.2	96002519
Accessories							
CONTRAST I BRA LG	LONG YOKE		96216177		96216176		96216178

*SAP No/Cat.No. supplies one baffle (for four baffles order four Barn doors).