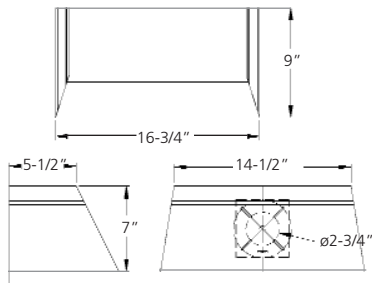


AWMT Series



Suitable for wet locations
Lamp included



A full cutoff architectural trapezoidal wall mount downlight for specification grade outdoor applications with a wideforward asymmetrical distribution.

Housing

Die-cast aluminum construction with hinged door for easy servicing by loosening two stainless steel screws on the side opposite the integral hinges. Silicone gasket provides watertight operation.

Optics/Lens

One piece anodized aluminum specular reflector can easily be removed by loosening screws to gain access to ballast components. Tempered clear glass lens with silicone gasket is secured to door with stainless screws.

Electrical

Socket is medium base porcelain 4kv pulse rated. HID ballast is up to 50W/175W high pressure sodium or metal halide core and coil, NPF or HPF.

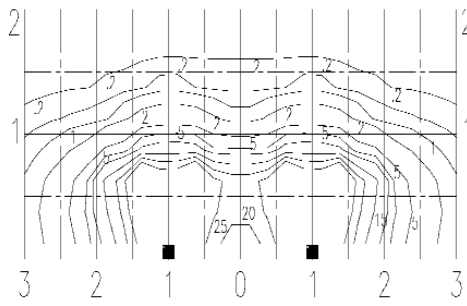
Surface Wall Mounting

Heavy-duty galvanized steel plate mounted to the wall. Fixture assembly slips over mounting plate for easy and quick mounting to standard J-boxes. Built-in leveling gauge is provided for TRUE LEVEL mounting.

Finish

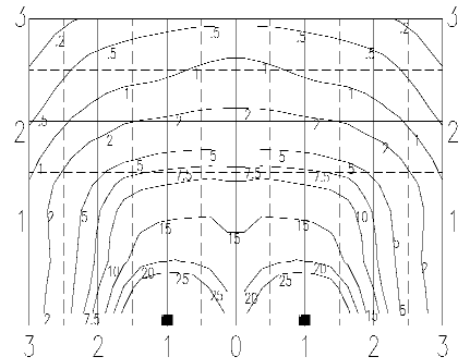
Standard finish is thermoset bronze powder coating.

175W MH ED17 Med. Clear
ISO Footcandela Chart
Option-3: Wide Distribution



Note: 2 units are spaced 20 ft. apart, mounted at 10 ft. M.H.

175W MH ED17 Med. Clear
ISO Footcandela Chart
Option-4: Forward Throw



Note: 2 units are spaced 20 ft. apart, mounted at 10 ft. M.H.

Ordering Example

Unit	Photometrics	Mounting	Wattage	Lamp Style	Voltage	Ballast Style	Finish	Options
AWMT Architectural Wall Mount	3 - Wide Throw FT - Fwd Throw	9 - Wall Mount	50	H	120	H	BZ	EM
			1 - 26, 32, 42W	CFL	120	H - HPF	BZ - Bronze	PE (Photocell)
			2 - 26, 32, 42W	H - MH	208	N - NPF		EM (EM Qz Rel.)
			50 - 50W	LS - HPS	240			SIF (1 fuse)
			70 - 70W		277			DIF (2 fuse)
			100 - 100W		4MT			L Lamp
			150 - 150W					BP (Emergency Battery Backup for CFL)
			175 - 175W					

