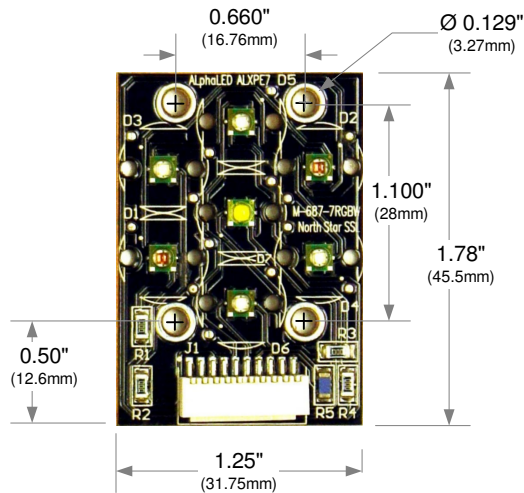


# ALXPE7 Light Engine by NORTH STAR SSL®



ALXPE7 AlphaLED Light Engine is capable of delivering millions of color along with pure white. The ALXPE7 features 6 CREE® Color XP-E and 1 White CREE® XP-G emitters with various optical choices. It's superior Copper Metal Core PCB is also optimized with extended thermal traces to obtain maximum thermal transfer. This allows excellent thermal management design to maximize LED life and performance.

## ALXPE7 Specifications\*

<b>Light Source</b>	Red 2 Pcs. XP-E	Green 2 Pcs. XP-E	Blue 2 Pcs. XP-E	Cool White 1 Pc. XP-G
<b>Light Output</b> (@ 65°C)	DWL: 620-630nm	DWL: 520-535nm	DWL: 465-485	CT: 5000K CRI: 75
	91lm at 350mA	161lm at 350mA	61lm at 350mA	139lm at 350mA
Max. Drive Current	700mA	1000mA	1000mA	1500mA
Forward Voltage	~4.2V Nominal	~6.8V Nominal	~6.6V Nominal	~3.3V Nominal
Max. Power	3 Watt	6.8 Watt	6.6 Watt	4.95 Watt
Thermal Resistance				
<b>Optics: 10mm OD</b>	Narrow 11 Deg.	Medium 26 Deg.	Wide 46 Deg.	Elliptical
<b>Mounting</b>	0.156" (3.96mm) ID, 3 Locations			
<b>Connection</b>	On Board Molex Connector P#: 87438. Wire harness with 10 Conductor			
<b>Environmental</b>	Board Temperature Limits: -20°C to 70°C. Environment: Non-corrosive, Humidity: 0-95% non-condensing			

\* Specifications are subject to change without notification. Please consult factory for the latest information about our products.