

Product # _____ Type _____ Date _____

Project Name _____

Project Location _____ Prepared By _____

300W LED Linear Highbay

300W LED Linear Highbay

The 300 watt LED Linear Highbay has been engineered to efficiently light any large interior space. It provides specification grade optical performance using high efficacy LED and high power factor LED drivers.

Construction

The LED Linear Highbay has a flexible modular design made out of aluminum alloy.

Optics/Lens

The 300 watt LED Linear Highbay utilizes IP65 sealed light modules which are field replaceable. Available in 90 degree and 30x100 degree beam patterns.

Electrical

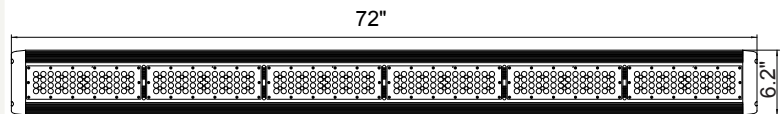
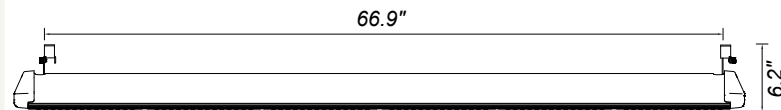
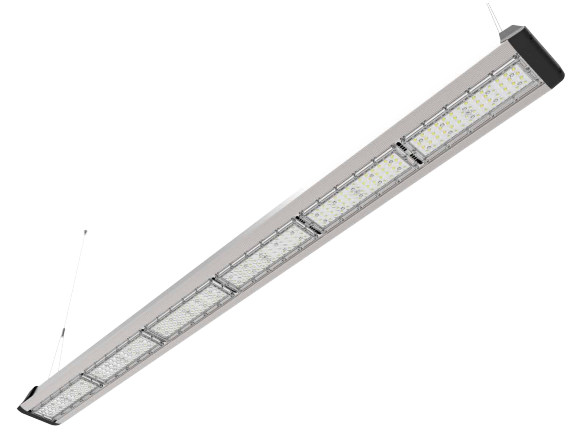
Performance greater than 100 lumens per watt. Standard Color Temperature 5500K, CRI of 80 or greater. Other optional color temp and CRI available on request. LED Drivers: UL/CSA recognized component to meet UL8750 & EN61347 (USR/CNR -E328335). Suitable for input power at 100-277 VAC. Minimum power factor over 0.95 with an operating temperature range of -22F-113F (-30C-45C). Available dimming options include: PWM, 1-10V, Microwave sensor, or Infrared sensor.

Product Applications

The LED Linear Highbay is designed to efficiently light any large interior space such as warehouses and manufacturing facilities, convention centers/sporting arenas, big-box retail stores, cold storage facilities, gymnasiums and natatoriums.

Warranty and Certifications

5 years for LED Light Engine and Driver 50,000 hours L70 LED Illumination per LM-80. cETLus wet locations in compliance with UL 1598 and CSA C22.2 NO. 250.0 standards. IP65 rated. Suitable for indoor/outdoor wet or damp location use. DLC listed.



Weight: 30.2lbs / 13.7kg



Ordering Guide

MODEL	TOTAL LED POWER	SERIES	CCT COLOR TEMP	LIGHT BEAM SPREAD	INPUT VAC	LIGHTING CONTROL	MOUNTING OPTION
LHB	300 300 = 300W	HB	2500-5500K* 4500-5500K Standard *+/-350K	90° 30x100°	U U = Universal 120V to 277V 48 = 480V* *Consult factory for 48	D D = Non Dimming D = Dimming 1-10V PWM=PWM MS=Microwave Sensor IS=Infrared Sensor	SM- Surface Mount CM- Chain Mount

Note: Due to continued efforts to improve our products, specifications are subject to change without notice.

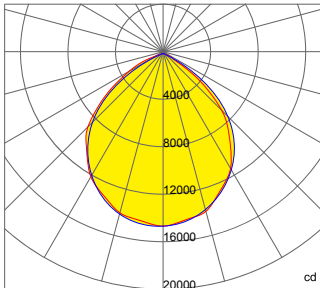


835 Industrial Drive, Elmhurst, IL 60126 708.681.4330 www.nslights.com

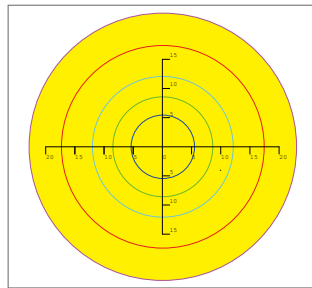
300W LED Linear Highbay

Photometrics

90 DEGREE LENS



— 0.0~180.0
— 90.0~270.0

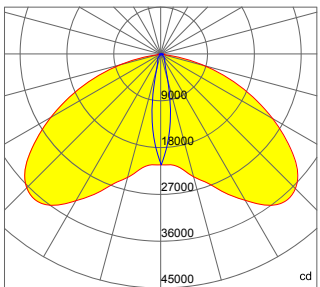


Mounting Hight 25m, 0 Tilt,
50LUX-5LUX

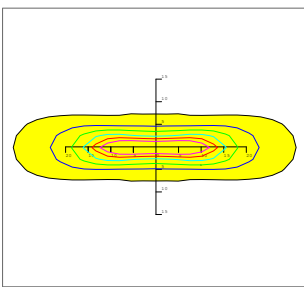
Illumination-90 Degree Beaming Angle		
Height	Beam Diameter	LUX
9m	φ 24m	133LUX
10m	φ 28m	109LUX
11m	φ 31m	90LUX
12m	φ 34m	77LUX
13m	φ 36m	65LUX

Beam Angle (50% max)	90 DEG
Field Angle (10%)	130 DEG
Luminous Flux (IES)	>30,000 lm
Light Efficacy (IES)	>100 lm/W
UGR	27
Cutoff Classification	Cutoff

30×100 DEGREE LENS



— 0.0~180.0
— 90.0~270.0



Mounting Hight 14m, 0 Tilt,
50LUX-5LUX

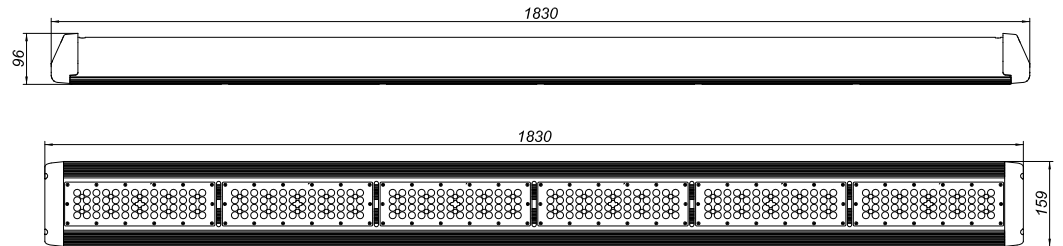
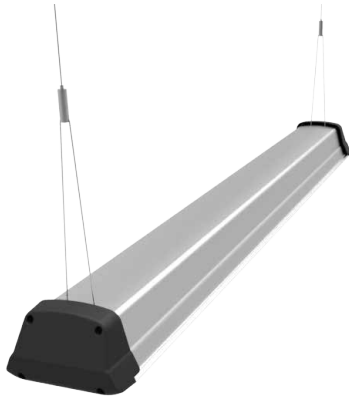
Illumination30/100 Degree Beaming Angle		
Height	Rectangular Light Spot	LUX
9m	4×17m	314LUX
10m	4×19m	254LUX
11m	5×21m	209LUX
12m	5×22m	176LUX
13m	6×24m	149LUX

Beam Angle (50% max)	30×100 DEG
Field Angle (10%)	50×120 DEG
Luminous Flux (IES)	>30,000 lm
Light Efficacy (IES)	>100 lm/W
UGR	11/38
Cutoff Classification	Semi-Cutoff

300W LED Linear Highbay

Mounting Options

Chain Mount



Surface Mount

